



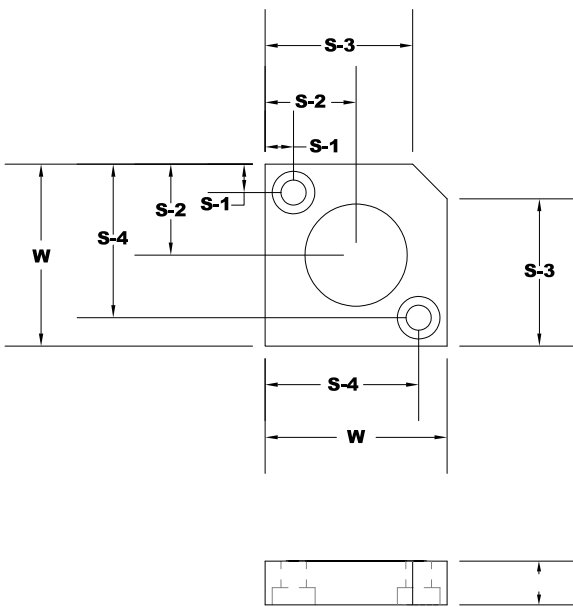
# CPLP-PLP Parting Line Pads

- **Customs Available Upon Request**



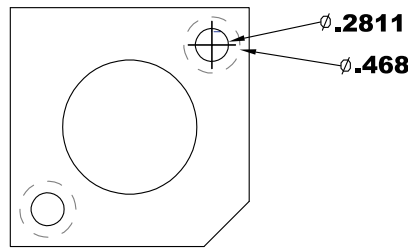
Material: 4140 - 50RC

## Corner Parting Line Pad



Part#	"T" +.001	"W" -.004 +.008	"S-1"	"S-2"	"S-3"	"S-4"
CPLP-1.0	.480"	2"	0.312	0.5	1.5	1.687
CPLP-1.5	.480"	3"	0.5	0.75	1.5	2.5
CPLP-2.0	.480"	4"	0.075	1	2.5	3.25
CPLP-2.5	.480"	5"	1"	1.25	3.5	4"
CPLP-3.0	.480"	6"	1"	1.5	4.5	5"

CPLP-01



- **CPLP-01**  
Screw Hole 02811 x 0.468
- **CPLP-1.5 to CPLP-3.0**  
Screw Hole 02811 x 0.468

## Parting Line Pad

Part#	"T" +.001	"W" -.004 +.008	"L" -.004 +.008	"S-1"	"S-2"	"S-3"
PLP-01	.480"	1"	3"	0.75	0.5	1.5
PLP-02	.480"	1-1/2"	3"	0.75	0.75	1.5
PLP-03	.480"	2"	4"	0.75	1	2.5
PLP-04	.480"	2-1/2"	5"	0.75	1.25	3.5
PLP-05	.480"	3"	6"	0.75	1.5	4.5

